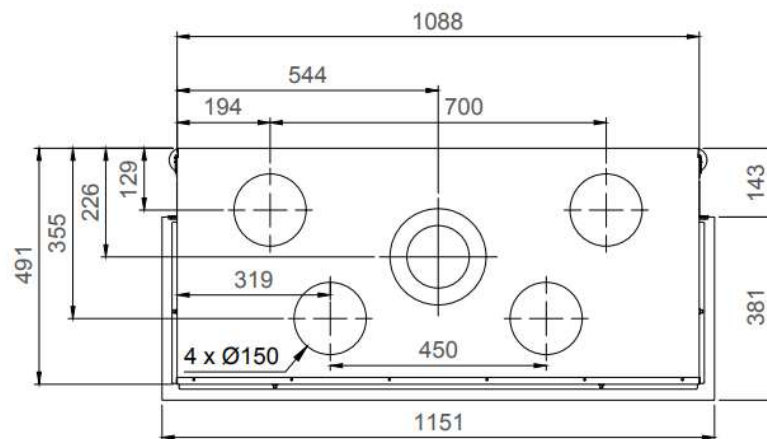
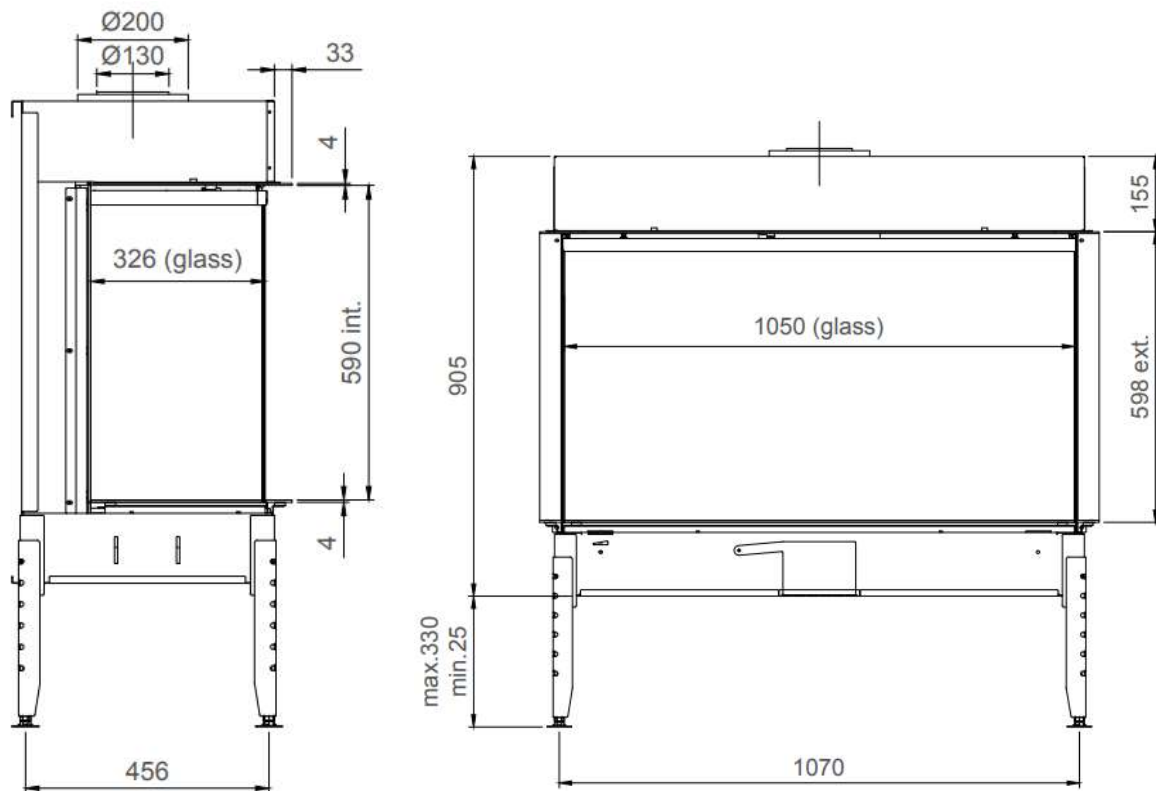




TRUE VISION 1050 DC



ECO SWITCH ECO WAVE

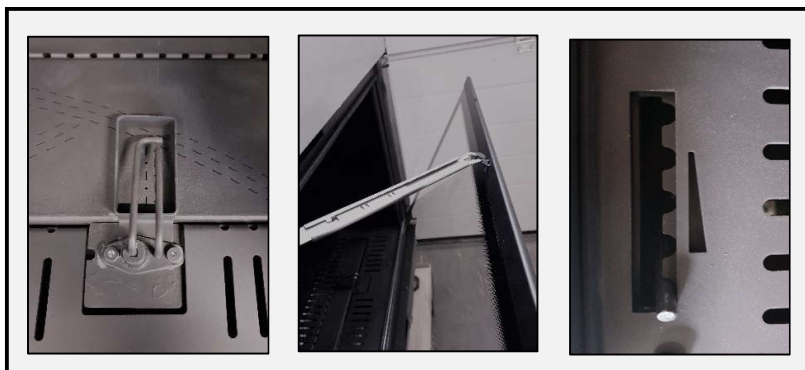
DE SMARTE LØSNINGENE:

Direkte tenning

Åpne/lukke glass, ingen demontering

Luftregulering i brennkammer

M-design peiser kan styres med smarttelefon/nettbrett.



Ved sett H1



Ved sett H2



Effekt (Min-maks).....	2-13,5kw
Virkningsgrad.....	78% (LPG70%)
Vekt	165kg
Energimerking	D
Avgass størrelse	$\varnothing 200/130\text{mm}$
Eco Wave/Eco Switch.....	JA